

Open space type definitions

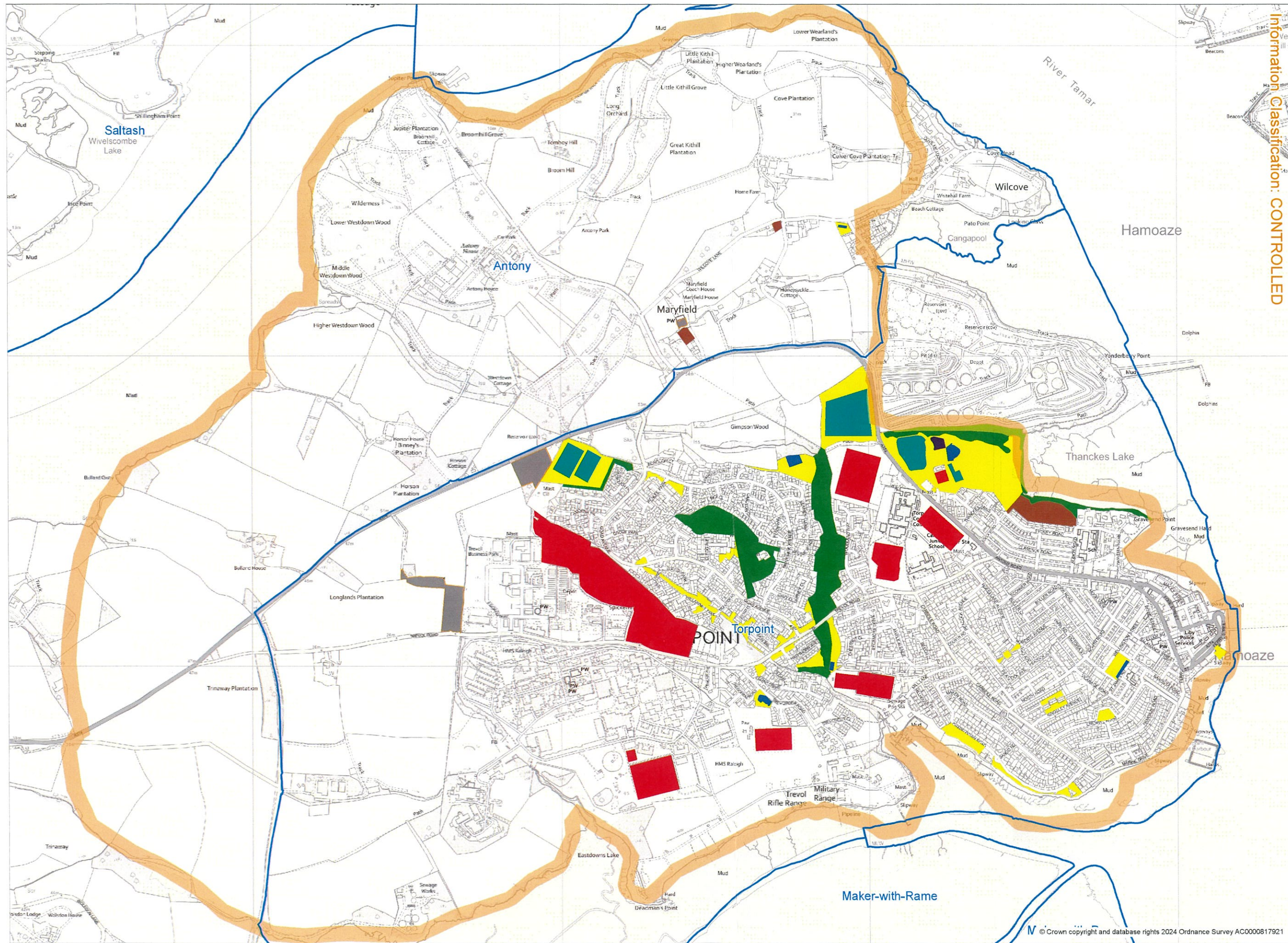
Open Space Type & Ref No.	Planning Policy Guidance PPG17 typology	Category descriptions likely to be found in Cornwall	Unless adjacent other OS, min. size of space (m ²)
1. Parks and gardens; Amenity green space; Civic spaces	Parks	Urban parks, 'recreation grounds', 'King George V playing fields' or any decent 'playing fields' with multiple formal uses other than sport. Could contain equipped play areas. Millennium Greens.	>1000
	Amenity green space	Informal recreation spaces, landscaped & managed (formally rather than natural) green spaces in and around housing, hospitals, colleges & public buildings. Village greens.	>1000
	Civic Spaces	Civic and market squares and other hard surfaced areas designed for pedestrians.	>500 These are sometimes relatively small, but highly strategic
	Public gardens.	Highly formalized public gardens, comprising floral displays, seating.	
2. Natural and semi-natural green spaces, Green corridors, accessible countryside in urban fringe areas	Natural and semi-natural green spaces	Land that is open to the public that is predominantly managed for nature conservation. Publically accessible nature reserves, woodlands, urban forestry, scrub, heath, grasslands (e.g. commons and coastal), wetlands, open and running water, reservoirs, heritage mine workings and derelict open land and rock areas (e.g. cliffs, quarries and pits). Country Parks – Tehidy & Kitt Hill. Accessible beaches down to Mean Sea Level. Unlike other typologies the majority of the space will not receive regular short grass mowing. Long established & permanent grasslands managed for meadow flora through one or two crops per year or by natural or livestock grazing, accessible beyond any PROW.	>1000
	Green Corridors	Riverside and other narrow strips of land associated with public access, bridleways, cycle ways, national trails, former tramways and rights of way.	>500
	Accessible countryside in urban fringe areas	Generally agricultural or private natural space adjoining housing areas where informal recreation has been established and permitted for at least five years. This is more than a mere public right of way across land, and implies that the public may roam & play throughout the land as long as they adhere to the Countryside Code.	>1000

Open Space Type & Ref No.	Planning Policy Guidance PPG17 typology	Category descriptions likely to be found in Cornwall	Unless adjacent other OS, min. size of space (m ²)
3. Public access sports facilities (outdoor): available for community games	Outdoor sports facilities (with natural or artificial surfaces and either publicly or privately owned) [Split based upon accessibility for general public]	Seasonal and fixed spaces that are formally used for junior or adult sports leagues and are openly accessible to the public (fees may apply). Outdoor gym equipment. Natural or artificial surfaces and either publicly or privately owned - including tennis courts, sports pitches, athletics tracks and other outdoor sports areas, which may be used for informal recreation when not in sporting use. Public access should be interpreted as available for community use for appropriate sports matches. It might not necessarily mean that the sports ground can be accessed by others for informal uses e.g. dog walking. Very often these facilities are located within parks or recreation grounds (typology 1), in which case only the formal pitch should be distinguished in this category.	>500
4. Children's play area – equipped	Provision for children	Public areas specifically laid out for children's play either comprising landscaping or equipment to provide a range of play opportunities. Free access playgrounds and Adventure Playgrounds (e.g. Gwel-An-Top, Redruth).	No minimum for existing. Usually, but not always, part of other open space. In future minimum of 500m ²
5. Provision for teenagers – equipped facilities	Provision for teenagers	Public areas specifically laid out for young people such as multi-use games areas (MUGA), wheeled sports & skate parks, outdoor basketball hoops, and informal 'hanging out' areas or teenage shelters. Extreme play equipment aimed primarily at 12-17yrs age group.	No minimum for existing. Usually, but not always, part of other open space. In future minimum of 500m ²
6. Allotments, community gardens, and city (urban) farms	Allotments, community gardens, and city (urban) farms	Local authority or privately operated allotments, community orchards. Permaculture and community food growing initiatives.	Non standard small plots & access: >300m ² In future minimum of 2500m ²
7. Cemeteries and churchyards	Cemeteries and churchyards	Operating & closed graveyards, cemeteries, gardens of remembrance, church grounds, woodland burial land.	>1000

Open Space Type & Ref No.	Planning Policy Guidance PPG17 typology	Category descriptions likely to be found in Cornwall	Suggested size threshold. Unless strategically significant the minimum size of space (m ²).
8. School pitches and outdoor sports club facilities (No or limited public access)	Outdoor sports facilities (with natural or artificial surfaces and either publicly or privately owned) [Split based upon accessibility for general public]	School playing fields and any land or portions of land associated with a school used for outdoor sporting purposes. Golf courses*, pitch & putt*, bowling greens and private sports clubs with limited public (non-member) access. Includes pitches on military bases, college campuses and semi-private institutions. Sports involving motorised vehicles or weapons are excluded. * Facilities omitted from evaluations to enable clearer comparison.	>1000

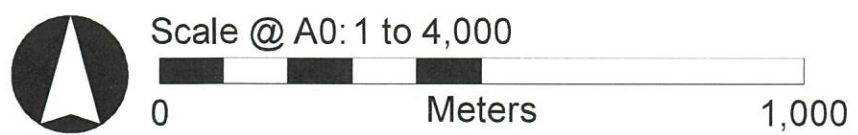
OPEN SPACE STRATEGY (2024)

Information Classification: CONTROLLED



Legend

-  Study Area
-  Parish Boundary
- Types of Open Space**
-  1. Parks / amenity
-  2. Natural space
-  3. Outdoor sports (public)
-  4. Children's play (equipped)
-  5. Youth facility (equipped)
-  6. Allotments
-  7. Cemetery / churchyard
-  8. School / club pitches
-  9. New POS proposal



© Crown copyright and database rights 2024 Ordnance Survey AC0000817921