



5 APRIL 2023

## **COST OF LIVING CRISIS IN CORNWALL**

**Dear Sir / Madam,**

As you will know, our communities are currently experiencing a cost-of-living crisis, exacerbated in Cornwall by a housing crisis and a low wage economy.

Last year, Citizens Advice Cornwall helped more than 9,000 people across all areas of the county with a wide range of issues, including help with energy bills, debt, benefits claims, housing and employment issues.

This year, our charity is facing unprecedented demand for our free, independent and confidential service while also grappling with our own increased running costs.

We have expanded our advice sessions to include foodbanks and also run drop-ins in Bude and Hayle. To meet the growing need, we would like to take our service to more communities but to do this we need additional funds.

We appreciate there are many demands on restricted council budgets but any financial support your authority is able to provide would be very warmly welcomed.

We would be happy to come and talk to your members about our work in your area and answer any questions or listen to any suggestions they may have.

**Yours sincerely,**

**Gill Pipkin (Chief Executive – Citizens Advice Cornwall)**

### **LAST YEAR WE...**

- ⊕ Helped **9,000** people with **37,000** issues
- ⊕ Helped people in Cornwall and the IoS gain **£8.2** million in income
- ⊕ Wrote-off debt worth **£1.1 million** for people in Cornwall and the IoS
- ⊕ For every **£1** invested in Citizens Advice Cornwall we generated **£2.38** in savings to public services
- ⊕ **91%** of people said we helped them find a way forward
- ⊕ **93%** of people would recommend our services to others.

Citizens Advice Cornwall is a trading name of CAB Cornwall: a company registered in England. Company No: 04409017. Charity Reg No: 1096193. Registered Office: 21 Dean St, Liskeard PL14 4AB



# Parish Dashboard

March 2022 – February 2023

citizens advice

## In this/these parish/es we helped

Clients	97
Issues all	467

## Top Issues

Benefits & tax credits	113
Benefits Universal Credit	99
Debt	53
Financial services & capability	46
Housing	38

## Top 5 benefit issues

01 Initial claim	48
21 Personal independence payment	24
28 General Benefit Entitlement	16
23 Council tax reduction	12
99 Other benefits issues	12

## Top 5 debt issues

99 Other Debt	11
60 Debt Assessment	9
09 Council tax arrears	6
16 Water supply & sewerage debts	6
13 Credit, store & charge card debts	5

## Homelessness

03 Threatened homelessness	5
02 Actual homelessness	1

## Clients seen (parishes)



## Gender



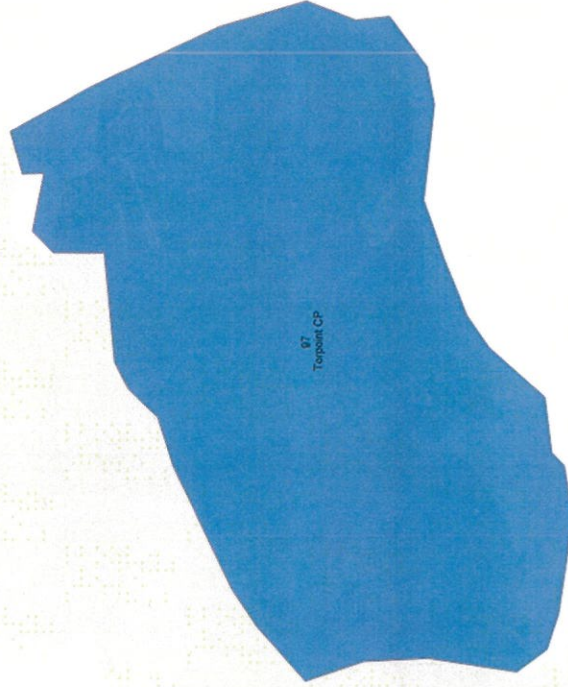
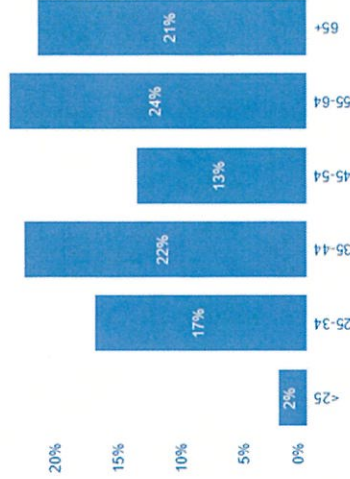
## Ethnicity



## Disabled or Long term health



## Age group



© 2023 Mapbox © OpenStreetMap

The **Client** figure at the top left of the dashboard represents the total number of unique clients with one or more case notes in the period.

The number before the issue on the **Top benefit issues** chart, and **Top debt issues** chart, is the code for the issue and does not represent the number of issues.



**Citizens Advice Cornwall, Clients by Parish, March  
2022 to February 2023**

<b>Parish</b>	<b>Number of clients</b>
Penzance CP	501
Camborne CP	451
Truro CP	404
Newquay CP	389
St. Austell CP	364
Bodmin CP	351
Falmouth CP	340
Redruth CP	299
Saltash CP	276
Liskeard CP	196
Hayle CP	188
Treverbyn CP	185
St. Ives CP	182
Roche CP	169
Carn Brea CP	161
Helston CP	149
Launceston CP	133
St. Blaise CP	133
St. Stephen-in-Brannel CP	127
Penryn CP	125
Bude-Stratton CP	116
Callington CP	109
Calstock CP	102
Torpoint CP	97
Wadebridge CP	94
Perranzabuloe CP	91
St. Agnes CP	87
St. Columb Major CP	86
Illogan CP	85
Kenwyn CP	84
St. Just CP	78
Looe CP	70
St. Enoher CP	69
St. Dennis CP	62
Camelford CP	60
St. Cleer CP	51
Porthleven CP	46
Ludgvan CP	45
Perranuthnoe CP	45
Gwinear-Gwithian CP	44
Colan CP	43
Tywardreath and Par CP	43
Lanner CP	41



Breage CP	38
Padstow CP	38
Crowan CP	37
St. Day CP	37
Mylor CP	36
Mevagissey CP	35
Lostwithiel CP	34
Feock CP	33
Probus CP	33
Millbrook CP	32
Wendron CP	32
Dobwalls CP	29
St. Erth CP	29
St. Ive and Pensilva CP	28
St. Mewan CP	28
Marazion CP	27
St. Buryan, Lamorna and Paul CP	26
St. Erme CP	26
Constantine CP	25
Mullion CP	25
St. Keverne CP	25
St. Newlyn East CP	25
Delabole CP	24
Kea CP	24
Pelynt CP	24
Fowey CP	23
Luxulyan CP	23
Mawnan CP	23
Ponsanooth CP	23
Stithians CP	23
Carharrack CP	22
Stokeclimsland CP	22
Landrake with St. Erney CP	21
Polperro CP	21
Portreath CP	21
Carlyon CP	20
Chacewater CP	20
Linkinhorne CP	20
Mabe CP	20
St. Germans CP	20
Crantock CP	19
Lanivet CP	19
Lanteglos CP	19
Mawgan-in-Pydar CP	19
Tintagel CP	19
Budock CP	18
Gwennap CP	18
Menheniot CP	18

Sennen CP	17
St. Clement CP	17
Grade-Ruan CP	16
Madron CP	16
Ladock CP	15
St. Austell Bay CP	15
St. Winnow CP	15
St. Kew CP	14
Deviock CP	13
Grampond with Creed CP	13
St. Eval CP	13
St. Neot CP	13
Forrabury and Minster CP	12
Perranarworthal CP	12
Sancreed CP	12
St. Hilary CP	12
St. Merryn CP	12
St. Minver Lowlands CP	12
Botusfleming CP	11
Davidstow CP	11
Duloe CP	11
Gweek CP	11
Landewednack CP	11
Maker-with-Rame CP	11
Morval CP	11
Poundstock CP	11
St. Endellion CP	11
Tregony with Cuby CP	11
Gerrans CP	10
Pentewan Valley CP	10
St. Keyne and Trewidland CP	10
St. Minver Highlands CP	10
Towednack CP	10
Veryan CP	10
Week St. Mary CP	10
Cardinham CP	9
Cubert CP	9
Lezant CP	9
Mawgan-in-Meneage CP	9
St. Allen CP	9
St. Tudy CP	9
Whitstone CP	9
Kilkhampton CP	8
Lewannick CP	8
Morwenstow CP	8
North Petherwin CP	8
South Hill CP	8
St. Just-in-Roseland CP	8

St. Mabyn CP	8
St. Pinnock CP	8
St. Teath CP	8
Jacobstow CP	7
North Hill CP	7
North Tamerton CP	7
Sheviock CP	7
South Petherwin CP	7
St. Breock CP	7
St. Levan CP	7
St. Thomas the Apostle Rural CP	7
Egloshayle CP	6
Lanlivery CP	6
Sithney CP	6
St. Dominick CP	6
St. Ervan CP	6
St. Gennys CP	6
St. Issey CP	6
St. John CP	6
St. Martin-by-Looe CP	6
Warbstow CP	6
Withiel CP	6
Altarnun CP	5
Cury CP	5
Launcells CP	5
St. Mellion CP	5
St. Stephens By Launceston Rural CP	5
Antony CP	4
Boyton CP	4
Landulph CP	4
Lanreath CP	4
Marhamchurch CP	4
St. Breward CP	4
St. Veep CP	4
Tresmeer CP	4
Warleggan CP	4
Werrington CP	4
Advent CP	3
Germoe CP	3
Helland CP	3
Lawhitton Rural CP	3
Michaelstow CP	3
Pillaton CP	3
St. Goran CP	3
Blisland CP	2
Braddock CP	2
Egloskerry CP	2
Laneast CP	2



St. Juliot CP	2
St. Martin-in-Meneage CP	2
St. Wenn CP	2
Trewen CP	2
Zennor CP	2
Gunwalloe CP	1
Lanhydrock CP	1
Lesnewth CP	1
Manaccan CP	1
Morvah CP	1
Otterham CP	1
Philleigh CP	1
Quethiock CP	1
Ruanlanihorne CP	1
St. Clether CP	1
St. Ewe CP	1
St. Michael Penkevil CP	1
St. Sampson CP	1
Tremaine CP	1
Trevalga CP	1
Grand Total	8,797

